



*L'ingénierie  
acoustique et vibratoire  
depuis 1975*



# Railway Stations and Airports

# LASA : Acoustic and Vibration Engineering since 1975



4.9

million euros  
revenue in 2024

5000

clients  
trusting us since 1975

25

software tools  
developed in-house by LASA



OPQIBI qualifications  
Professional Qualification Organization for Engineering, Construction and Industry

10

sites

Paris – Lyon – Bordeaux – Marseille  
Rennes – Nantes – Toulouse – Annecy  
Antilles – Guyane

6

partners

all actively involved in the firm



90

sound level meters

vibration analyzers, single or multichanne

20

noise and vibration sources

omnidirectional, directional, standalone, low frequencies, shock machines

Understanding  
of architectural and client requirement

Feasibility  
of solutions

Optimization  
of proposed solutions

Satisfaction  
of our clients

50

team members  
experts and passionate about their craft

10 000

completed projects

# New Terminal 1 – Lyon-Saint-Exupéry Airport (69)

L'ingénierie  
acoustique et vibratoire  
depuis 1978



**Completion** : 2012 – 2019

**Cost of works** : €180 million

**Architects** : Rogers Stirk Harbour / Chabannes

**Description** : Construction of a new passenger terminal (8 million passengers/year), including a 10,000 m<sup>2</sup> “wait and shop” area with retail, restaurants, and relaxation spaces. The study focused on internal acoustics of the halls and central space, including evaluation of public address speech intelligibility using RASTI analysis.

**LASA’s scope** : Technical consultancy during both design and construction phases, 3D acoustic modelling for reverberation control and speech intelligibility optimisation, and preparation of the acoustic specification report (including partition sizing).

# Terminal 2 Extension - Lyon Airport (Vinci) – Lyon (69)

L'ingénierie  
acoustique et vibratoire  
depuis 1978



**Completion :** 2025 - 2027

**Architect :** WSP

**Description :** Design and build project for the extension, refurbishment, and energy performance improvement of Terminal 2. The project includes the creation of international-standard waiting and retail areas.

**LASA's scope :** Initial assessment of vibration and noise conditions, and monitoring of acoustically relevant construction works during project execution.

# MP1 Terminal – Marseille Provence Airport (Phase 1) – Marignane (13)

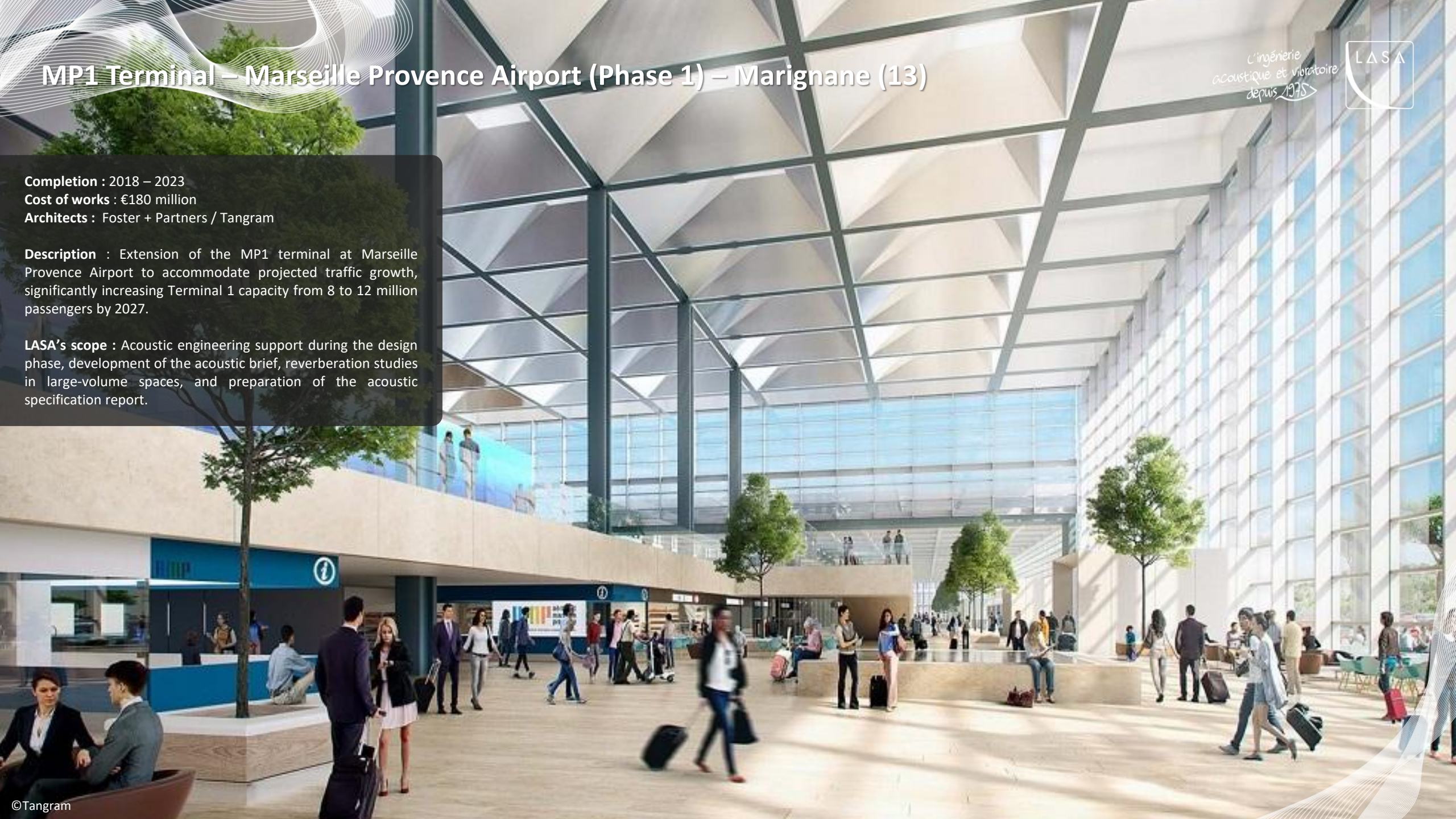
L'ingénierie  
acoustique et vibratoire  
depuis 1978



**Completion :** 2018 – 2023  
**Cost of works :** €180 million  
**Architects :** Foster + Partners / Tangram

**Description :** Extension of the MP1 terminal at Marseille Provence Airport to accommodate projected traffic growth, significantly increasing Terminal 1 capacity from 8 to 12 million passengers by 2027.

**LASA's scope :** Acoustic engineering support during the design phase, development of the acoustic brief, reverberation studies in large-volume spaces, and preparation of the acoustic specification report.



# MP1 Terminal – Marseille Provence Airport (Phase 1) – Marignane (13)

L'ingénierie  
acoustique et vibratoire  
depuis 1978



**Completion :** 2018 – 2023  
**Cost of works :** €180 million  
**Architects :** Foster + Partners / Tangram

**Description :** Extension of the MP1 terminal at Marseille Provence Airport to accommodate projected traffic growth, significantly increasing Terminal 1 capacity from 8 to 12 million passengers by 2027.

**LASA's scope :** Acoustic engineering support during the design phase, development of the acoustic brief, reverberation studies in large-volume spaces, and preparation of the acoustic specification report.



# Acajou Project – Bordeaux Airport – Mérignac (33)

L'ingénierie  
acoustique et vibratoire  
depuis 1978



**Completion :** 2024 - 2026  
**Cost of works :** €12 million  
**Architect :** AMELLER DUBOIS

**Description :** Extension of the Iberian pier at Bordeaux-Mérignac Airport, including restructuring of the border control (Police aux Frontières) facilities.

**LASA's scope :** Acoustic engineering design and construction-phase supervision for the project, including public address (PA) system design for public areas, under subcontract to the architect.

# Lille-Lesquin Airport Terminal – Lille (59)

L'ingénierie  
acoustique et vibratoire  
depuis 1978



**Completion :** 2019 - 2023  
**Architect :** ENIA Architectes

**Description :** Rehabilitation and expansion of the passenger terminal, designed for projected demand through 2039.

**LASA's scope :** Technical assistance to the design team during both design and construction phases, 3D acoustic modelling to optimise internal acoustics (reverberation control) in terminal halls, and assessment of public address speech intelligibility.

# Lille-Lesquin Airport Terminal – Lille (59)

L'ingénierie  
acoustique et vibratoire  
depuis 1978



**Completion :** 2019 - 2023  
**Architect :** ENIA Architectes

**Description :** Rehabilitation and expansion of the passenger terminal, designed for projected demand through 2039.

**LASA's scope :** Technical assistance to the design team during both design and construction phases, 3D acoustic modelling to optimise internal acoustics (reverberation control) in terminal halls, and assessment of public address speech intelligibility.

# Las Américas Airport – Santo Domingo – Dominican Republic

L'ingénierie  
acoustique et vibratoire  
depuis 1978



**Completion :** 2018 - 2019

**Architect :** DICONFO

**Description :** Rehabilitation of the central atrium at Las Américas Airport, including the creation of a new cargo terminal and an office building.

**LASA's scope :** Acoustic engineering consultancy for the design team during the design phase, initial acoustic assessment, 3D numerical modelling for internal acoustic prediction, and preparation of the acoustic specification report.

# Grand Paris Express Line 15 – Vitry Centre Station – Vitry-sur-Seine (94)

L'ingénierie  
acoustique et vibratoire  
depuis 1978



**Completion :** 2017 - 2025  
**Architects :** King Kong / Systra

**Description :** Construction of a three-level underground station with the Vitry Centre surface structure. Platforms located 25 meters below ground, designed to handle 50,000 passengers per day. Large passenger circulation volumes with a "cave-like" architectural concept.

**LASA's scope :** Detailed design studies (execution phase) for public address and safety (SSI) sound systems in passenger areas, 3D acoustic modelling of the entire station, loudspeaker system design studies, and mapping of acoustic performance criteria.



# Grand Paris Express Line 15 – Les Ardoines Station – Vitry-sur-Seine (94)

L'ingénierie  
acoustique et vibratoire  
depuis 1978



**Completion :** 2017 - 2025

**Architects :** Valode et Pistre / Systra

**Description :** Construction of a three-level underground station with the Les Ardoines surface structure. Platforms located 28 meters below ground, designed to handle 95,000 passengers per day. Large-volume passenger circulation spaces.

**LASA's scope :** Detailed design (execution phase) studies for public address and fire safety (SSI) sound systems in passenger areas, 3D acoustic modelling of the entire station, loudspeaker system studies, and performance mapping (coverage, STI, etc.).

# Grand Paris Express Line 15 – Les Ardoines Station – Vitry-sur-Seine (94)

L'ingénierie  
acoustique et vibratoire  
depuis 1978



**Completion :** 2017 - 2025

**Architects :** Valode et Pistre / Systra

**Description :** Construction of a three-level underground station with the Les Ardoines surface structure. Platforms located 28 meters below ground, designed to handle 95,000 passengers per day. Large-volume passenger circulation spaces.

**LASA's scope :** Detailed design (execution phase) studies for public address and fire safety (SSI) sound systems in passenger areas, 3D acoustic modelling of the entire station, loudspeaker system studies, and performance mapping (coverage, STI, etc.).

# Grand Paris Express Line 15 – Val-de-Fontenay Station – Fontenay-sous-Bois (94)



**Completion :** 2021 - 2030

**Architects :** 'AS / Willmotte / Viguiier / FBCC / BIG / LA-BA / Ar-Thème

**Description :** Design-and-build project covering sections WS/ES/WN/EN of Metro Line 15 of the Grand Paris Express, including approximately 40 km of tunnels, 20 stations, a maintenance and control center (CER), ancillary structures, and associated real estate developments.

**LASA's scope :** Bid-phase support to the consortium for acoustic and vibration studies, including station acoustics and public address systems, technical equipment noise assessment, modelling, and vibration studies for both construction and operational phases.

# Grand Paris Express Line 15 – Bobigny - Pablo Picasso Station – Bobigny (93)

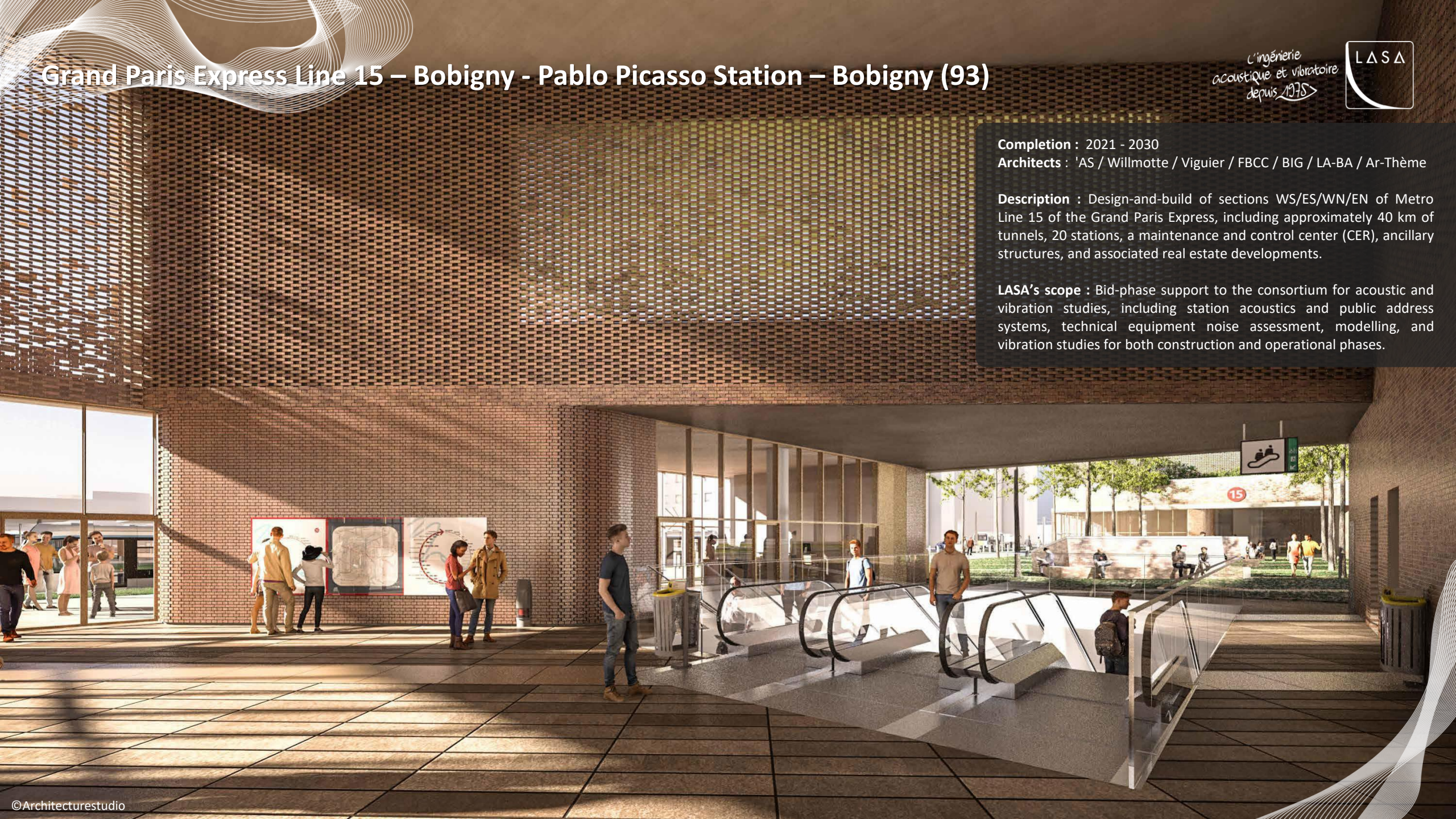
L'ingénierie  
acoustique et vibratoire  
depuis 1978



**Completion :** 2021 - 2030  
**Architects :** AS / Willmotte / Viguier / FBCC / BIG / LA-BA / Ar-Thème

**Description :** Design-and-build of sections WS/ES/WN/EN of Metro Line 15 of the Grand Paris Express, including approximately 40 km of tunnels, 20 stations, a maintenance and control center (CER), ancillary structures, and associated real estate developments.

**LASA's scope :** Bid-phase support to the consortium for acoustic and vibration studies, including station acoustics and public address systems, technical equipment noise assessment, modelling, and vibration studies for both construction and operational phases.



# Grand Paris Express Line 16 – Aulnay Station – Aulnay-sous-Bois (93)

L'ingénierie  
acoustique et vibratoire  
depuis 1977



**Completion :** 2021 – 2024  
**Cost of works :** €40.6 million  
**Architect :** Aldric Beckmann Architectes

**Description :** Construction of the new metro station in Aulnay-sous-Bois as part of the Grand Paris Express Line 16 project.

**LASA's scope :** Support to the contractor during the execution phase for the optimisation and validation of acoustic treatment solutions in passenger areas, including surface level (N0), concourse/mezzanine (S2), and platforms (S3).

# Grand Paris Express Line 15 – Nogent-Le Perreux Station – Le-Perreux-sur-Marne (94)

Ingénierie  
acoustique et vibratoire  
depuis 1978



**Completion :** 2021 - 2030

**Architects :** AS / Willmotte / Viguiier / FBCC / BIG / LA-BA / Ar-Thème

**Description :** Design-and-build of sections WS/ES/WN/EN of Metro Line 15 of the Grand Paris Express, comprising approximately 40 km of tunnels, 20 stations, a maintenance and control center (CER), ancillary structures, and associated real estate developments.

**LASA's scope :** Bid-phase support to the consortium for acoustic and vibration studies, including station acoustics and public address systems, technical equipment noise assessment, numerical modelling, and vibration studies for both construction and operational phases.

# Grand Paris Express Line 15 – Rosny Bois-Perrier Station – Rosny-sous-Bois (93)



**Completion :** 2021 - 2030  
**Architects :** AS / Willmotte / Viguier / FBCC / BIG / LA-BA / Ar-Thème

**Detailed description :** Design-and-build of sections WS/ES/WN/EN of Metro Line 15 of the Grand Paris Express, comprising approximately 40 km of tunnels, 20 stations, a maintenance and control center (CER), ancillary structures, and associated real estate developments.

**LASA's scope :** Bid-phase support to the consortium for acoustic and vibration studies, including station acoustics and public address systems, technical equipment noise assessment, numerical modelling, and vibration studies for both construction and operational phases.



# Grand Paris Express Line 15 – Bondy Station – Bondy (93)

L'ingénierie  
acoustique et vibratoire  
depuis 1978



**Completion :** 2021 - 2030  
**Architects :** AS / Willmotte / Viguier / FBCC / BIG / LA-BA / Ar-Thème

**Description :** Design-and-build of sections WS/ES/WN/EN of Metro Line 15 of the Grand Paris Express, comprising approximately 40 km of tunnels, 20 stations, a maintenance and control center (CER), ancillary structures, and associated real estate developments.

**LASA's scope :** Bid-phase support to the consortium for acoustic and vibration studies, including station acoustics and public address systems, technical equipment noise assessment, numerical modelling, and vibration studies for both construction and operational phases.



# Grand Paris Express Line 15 – Champigny Centre Station – Champigny-sur-Marne (94)

L'ingénierie  
acoustique et vibratoire  
depuis 1978



**Completion :** 2021 - 2030

**Architects :** 'AS / Willmotte / Viguier / FBCC / BIG / LA-BA / Ar-Thème

**Description :** Design-and-build of sections WS/ES/WN/EN of Metro Line 15 of the Grand Paris Express, comprising approximately 40 km of tunnels, 20 stations, a maintenance and control center (CER), ancillary structures, and associated real estate developments.

**LASA's scope :** Bid-phase support to the consortium for acoustic and vibration studies, including station acoustics and public address systems, technical equipment noise assessment, numerical modelling, and vibration studies for both construction and operational phases.

# Marengo Multimodal Hub – Halle des Mobilités – Toulouse (31)

L'ingénierie  
acoustique et vibratoire  
depuis 1978

LASA

La Fleuriste

**Completion :** 2023 – 2028  
**Cost of works :** €65 million  
**Architects :** BIG / A+ Architecture

**Description :** Multimodal transport interchange integrating rail, metro, bus, cycling, and pedestrian flows, with adjacent mixed-use spaces.

**LASA's scope :** Full acoustic and vibration engineering consultancy as part of the project management team, covering design, construction, and commissioning phases, including initial vibration assessment and detailed vibration studies.

# « La Factory » – Tramway Maintenance and Depot Centre – Lyon 7 (69)

Acoustique et Vibration  
depuis 1975



**Completion :** 2023 - 2023  
**Cost of works :** €70.6 million  
**Architect :** AIA Architectes

**Description :** Maintenance and storage facility for 48 trams (expandable to 66) in a dense urban environment. The project includes maintenance workshops, washing facilities, office spaces, and an independent 4,000 m<sup>2</sup> craft/industrial hub. Low-carbon design with timber structure.

**LASA's scope :** Acoustic and vibration engineering support to the design team. Bid-phase studies including acoustic and vibration concept design, reverberation control in workshops, and mitigation of operational noise impact on the surrounding urban environment. Non-awarded project.

# Gare du Nord 2024 – Paris (75)

L'ingénierie  
acoustique et vibratoire  
depuis 1978



**Completion :** 2019 - 2024  
**Cost of works :** €600 million  
**Architects :** Valode et Pistre / AREP

**Description :** Transformation of Gare du Nord to improve service capacity and passenger flow, including new departure and arrival terminals, pedestrian bridges, and additional services such as retail spaces, co-working areas, an event hall, a library, sports facilities, and restaurants.

**LASA's scope :** Initial acoustic measurements, 3D modelling, and studies of public address systems in both historic and new large-volume halls to improve speech intelligibility. STI (Speech Transmission Index) and SPL (Sound Pressure Level) mapping, preliminary sizing of the sound system, and design plans for loudspeaker distribution.

# Gare du Nord 2024 – Paris (75)

l'ingénierie  
acoustique et vibratoire  
depuis 1975



**Completion :** 2019 - 2024  
**Cost of works :** €600 million  
**Architects :** Valode et Pistre / AREP

**Description :** Transformation of Gare du Nord to improve service capacity and passenger flow, including new departure and arrival terminals, pedestrian bridges, and additional services such as retail spaces, co-working areas, an event hall, a library, sports facilities, and restaurants.

**LASA's scope :** Initial acoustic measurements, 3D modelling, and studies of public address systems in both historic and new large-volume halls to improve speech intelligibility. STI (Speech Transmission Index) and SPL (Sound Pressure Level) mapping, preliminary sizing of the sound system, and design plans for loudspeaker distribution.

# Lyon Part-Dieu Station - Operational Hub (COE) – Lyon (69)

L'ingénierie  
acoustique et vibratoire  
depuis 1978



**Completion :** 2019 - 2021

**Architect :** Archi Graphi

**Description :** Creation of a temporary Operational Hub (COE) within the RIR building at Lyon Part-Dieu station. The project includes coordination with works for the construction of Track L (Voie L) and associated railway infrastructure.

**LASA's scope :** On-site acoustic and vibration measurement campaign and analysis, assessment of potential disturbances caused by works in an occupied railway environment and by railway-induced vibrations, and evaluation of mitigation solutions.

# Lyon Part-Dieu Station – Fire Safety Public Address System (SSI) - Lyon (69)

L'ingénierie  
acoustique et vibratoire  
depuis 1978



**Completion :** 2022 - 2022  
**Architect :** AREP

**Description :** Testing and validation of the fire safety public address (SSI) sound system in Section 1 of the northern hall of the Béraudier concourse and gallery project at Lyon Part-Dieu station (Lyon 3rd district).

**LASA's scope :** Acoustic measurement campaign to validate the emergency public address system, including sound mapping, coverage uniformity, and speech intelligibility (STIPA) assessment. Technical support for system tuning and adjustments.

# Gare du Sud – Nice (06)

L'ingénierie  
acoustique et vibratoire  
depuis 1978



**Completion :** 2015 – 2018  
**Cost of works :** €66 million  
**Architect :** Reichen & Robert

**Description :** Renovation of the former Gare du Sud, a listed historic monument, into a mixed-use development including student housing and residences (11,810 m<sup>2</sup>), a 9-screen multiplex cinema (4,150 m<sup>2</sup>), retail spaces (10,025 m<sup>2</sup>), a covered market hall (1,685 m<sup>2</sup>), and a sports facility (1,350 m<sup>2</sup>), among other uses.

**LASA's scope :** Full acoustic engineering services as design consultant and construction-phase supervisor, covering both design development and site supervision.

# Gare du Sud – Nice (06)

L'ingénierie  
acoustique et vibratoire  
depuis 1978



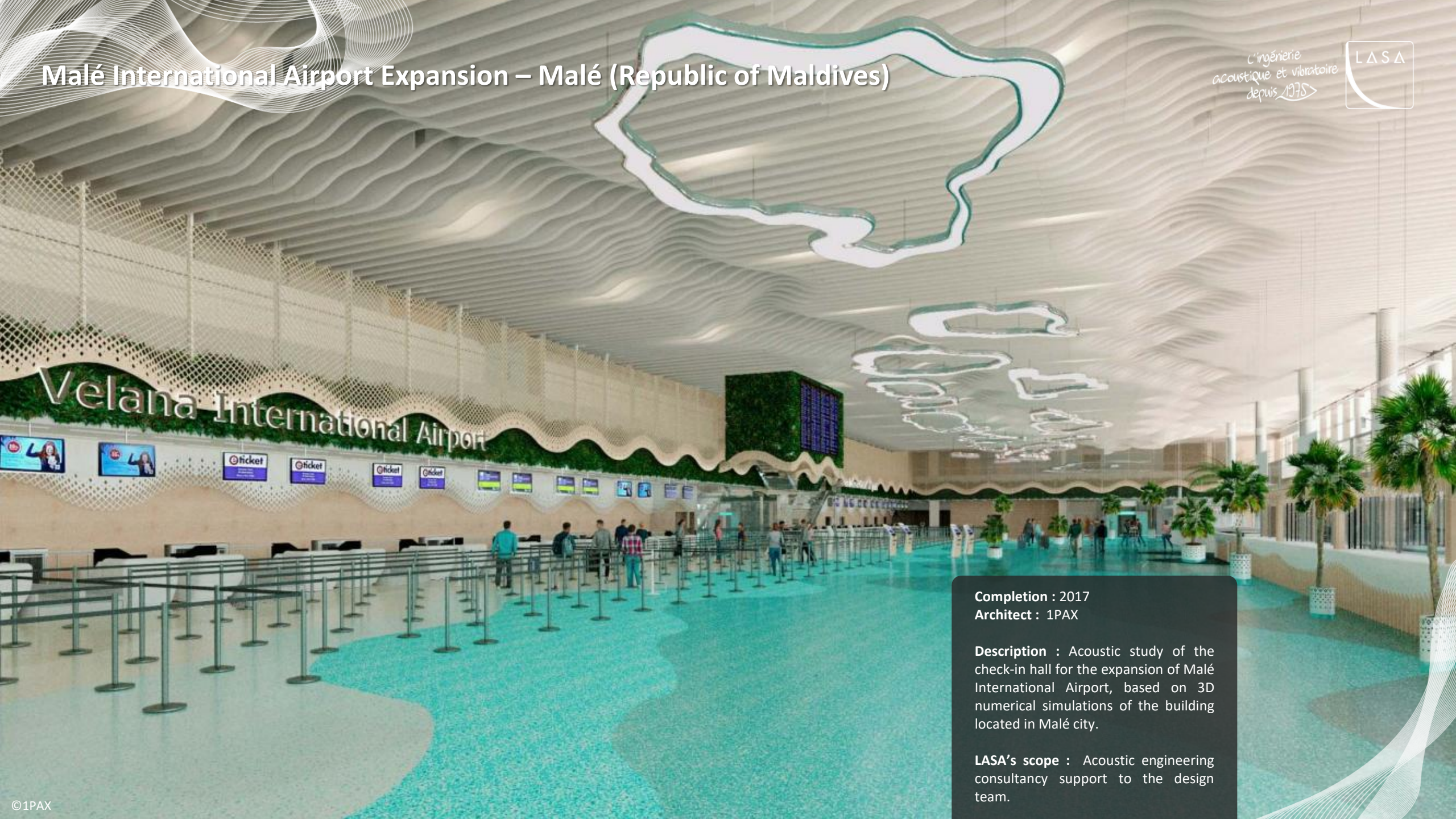
**Completion :** 2015 – 2018  
**Cost of works :** €66 million  
**Architect :** Reichen & Robert

**Description :** Renovation of the former Gare du Sud, a listed historic monument, into a mixed-use development including student housing and residences (11,810 m<sup>2</sup>), a 9-screen multiplex cinema (4,150 m<sup>2</sup>), retail spaces (10,025 m<sup>2</sup>), a covered market hall (1,685 m<sup>2</sup>), and a sports facility (1,350 m<sup>2</sup>), among other uses.

**LASA's scope :** Full acoustic engineering services as design consultant and construction-phase supervisor, covering both design development and site supervision.

# Malé International Airport Expansion – Malé (Republic of Maldives)

L'ingénierie  
acoustique et vibratoire  
depuis 1978



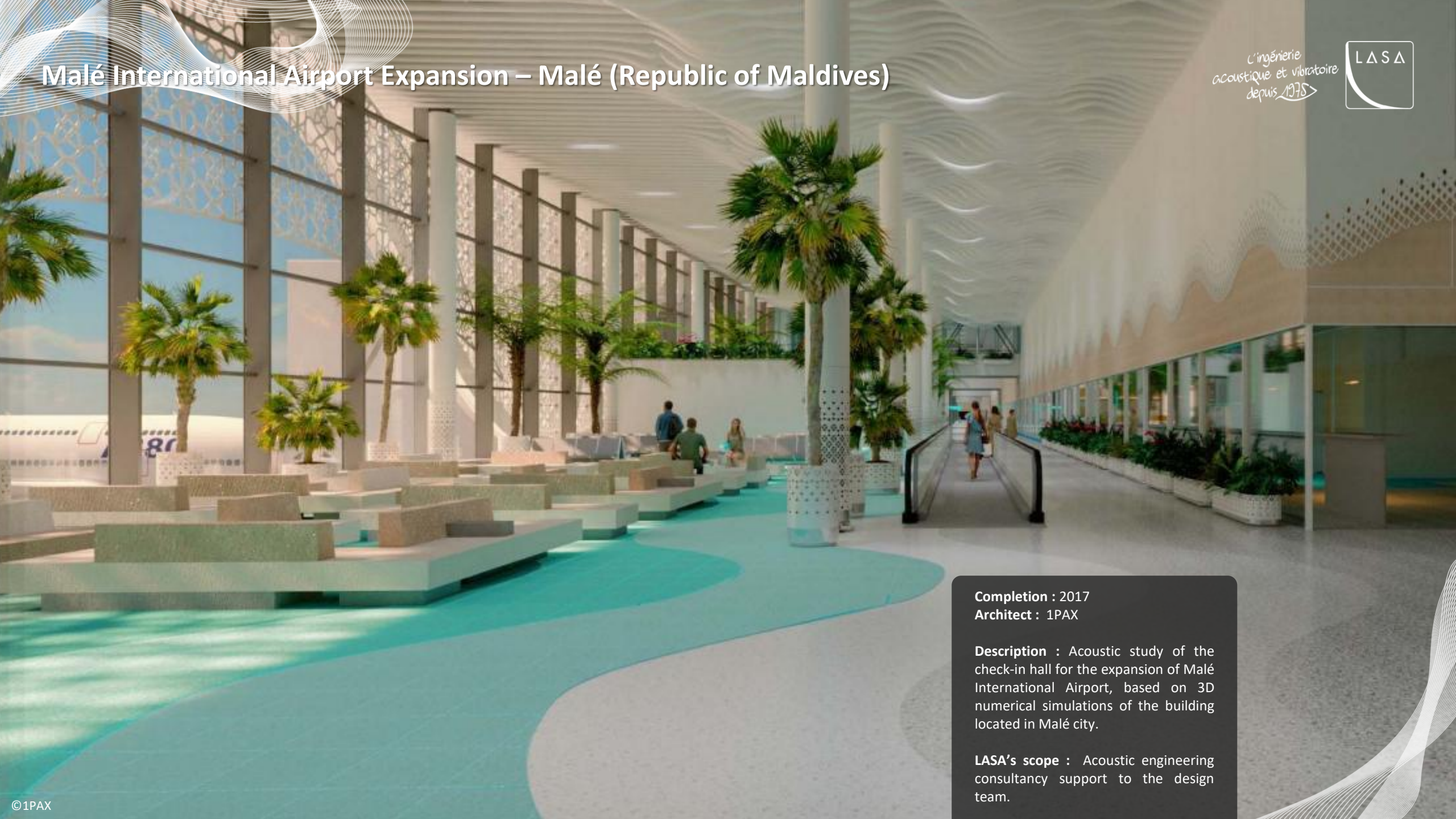
**Completion :** 2017  
**Architect :** 1PAX

**Description :** Acoustic study of the check-in hall for the expansion of Malé International Airport, based on 3D numerical simulations of the building located in Malé city.

**LASA's scope :** Acoustic engineering consultancy support to the design team.

# Malé International Airport Expansion – Malé (Republic of Maldives)

L'ingénierie  
acoustique et vibratoire  
depuis 1978



**Completion :** 2017  
**Architect :** 1PAX

**Description :** Acoustic study of the check-in hall for the expansion of Malé International Airport, based on 3D numerical simulations of the building located in Malé city.

**LASA's scope :** Acoustic engineering consultancy support to the design team.

# Roland Garros Airport Expansion – Saint-Denis – Réunion (97)

**Completion :** 2018 - 2018  
**Architect :** ENIA Architectes

**Description :** West and south terminal extensions and partial refurbishment of the passenger terminal at Roland Garros Airport, Réunion Island.

**LASA's scope :** Full design-phase acoustic consultancy as a subcontractor during the competition (bid) phase. Non-awarded project.

L'ingénierie  
acoustique et vibratoire  
depuis 1975



# Roland Garros Airport Expansion – Saint-Denis – Réunion (97)

**Completion :** 2018 - 2018  
**Architect :** ENIA Architectes

*L'ingénierie  
acoustique et vibratoire  
depuis 1978*



**Description :** West and south terminal extensions and partial refurbishment of the passenger terminal at Roland Garros Airport, Réunion Island.

**LASA's scope :** Full design-phase acoustic consultancy as a subcontractor during the competition (bid) phase. Non-awarded project.

# Montpellier Odysseum High-Speed Rail Station – Montpellier

**Completion :** 2014 - 2014  
**Architect :** Fosters + Partners

**Description :** Construction of the new Montpellier Odysseum TGV (high-speed rail) station.

**LASA's scope :** 3D acoustic modelling of the station and optimisation of proposed acoustic treatments during the PPP bid phase. Non-awarded project.

*L'ingénierie  
acoustique et vibratoire  
depuis 1975*



# New Doha International Airport – Doha (Qatar)

Completion : 2004 - 2012

Architect : ADPI

Description : Construction of a new airport in Doha.

**LASA's scope** : Acoustic consultancy support to the design team during both design and construction phases, including façade sound insulation studies, 3D acoustic modelling of internal spaces, and on-site acoustic measurements.

L'ingénierie  
acoustique et vibratoire  
depuis 1978

L A S A



# New Doha International Airport – Doha (Qatar)

**Completion :** 2004 - 2012

**Architect :** ADPI

**Description :** Construction of a new airport in Doha.

**LASA's scope :** Acoustic consultancy support to the design team during both design and construction phases, including façade sound insulation studies, 3D acoustic modelling of internal spaces, and on-site acoustic measurements.

*L'ingénierie  
acoustique et vibratoire  
depuis 1978*



# RTE Aerial Works Service – Avignon Provence Airport (84)

L'ingénierie  
acoustique et vibratoire  
depuis 1978



**Completion :** 2015 – 2018  
**Cost of works :** €16 million  
**Architect :** Cardete & Huet

**Description :** Aviation and office buildings housing pilots and maintenance services for helicopters used for works on the RTE electrical transmission network.

**LASA's scope :** Acoustic design consultancy for both indoor and outdoor site areas, including on-site measurements and 3D acoustic modelling of helicopter noise impact on the project and surrounding environment.

# Grand Paris Express Line 18 – Paris (75)

L'ingénierie  
acoustique et vibratoire  
depuis 1978



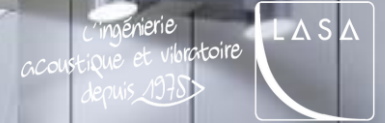
**Completion :** 2024 - 2030  
**Architect :** Groupement ICARE

**Description :** Construction of Metro Line 18 (Versailles–Orly), comprising approximately 35 km of track, including 13 km of elevated sections. The project includes 7 underground stations, 3 elevated stations, a maintenance and rolling stock depot (SNI/SMR) in Palaiseau, and 24 service structures (ventilation shafts, etc.).

**LASA's scope :** Assistant to the client (AMO) acting as an independent "second review" body for the verification of noise and vibration studies during the operational phase. LASA acted as a subcontractor to SYSTRA.



# Grand Paris Express Line 15 South – Val-de-Marne (94)



**Completion :** 2016 - 2016  
**Architects :** ANMA/ Valode & Pistre/ Richez/ King Kong

**Description :** Construction of the southern section of Metro Line 15 of the Grand Paris Express, forming part of the orbital metro network around Paris.

**LASA's scope :** Bid-phase support to the contractor consortium, in partnership with engineering consultancy Lombardi, for the preparation of the technical submission related to "acoustic and vibration impact and management of external construction sites" within the civil engineering works for Line 15 South.

## Contact – Administrative Information

L'ingénierie  
acoustique et vibratoire  
depuis 1978



### PARIS Office – Head Office

26, Rue Bénard  
75014 PARIS  
SIRET : 302 506 480 00086  
Phone : + 33 (0) 1 43 13 34 00  
Email : [contact@lasa.fr](mailto:contact@lasa.fr)

### SOUTH EAST Office

20, Boulevard Eugène Deruelle  
69003 LYON  
SIRET : 302 506 480 00045  
Phone : + 33 (0) 4 26 99 44 25  
Email : [sudest@lasa.fr](mailto:sudest@lasa.fr)

### SOUTH WEST Office

30, Rue Saint-Sernin  
33000 BORDEAUX  
SIRET : 302 506 480 00078  
Phone : + 33 (0) 5 32 09 08 97  
Email : [sudouest@lasa.fr](mailto:sudouest@lasa.fr)

### MEDITERRANEAN Office

Placette Valmante Michelet  
97, Traverse de la Gouffonne  
13009 MARSEILLE  
SIRET : 302 506 480 00102  
Phone : + 33 (0) 4 91 55 66 31  
Email : [mediterranee@lasa.fr](mailto:mediterranee@lasa.fr)

### RENNES - Local presence

Palpite coworking - Le Lavoir  
26, Rue de Léon  
35000 RENNES  
Phone : + 33 (0) 6 24 71 75 49  
Email : [rennes@lasa.fr](mailto:rennes@lasa.fr)

### NANTES - Local presence

30, Rue Emile Péhant  
44000 NANTES  
Phone : + 33 (0) 6 09 16 72 70  
Email : [nantes@lasa.fr](mailto:nantes@lasa.fr)

### TOULOUSE - Local presence

Phone : +33(0) 6 22 54 02 76  
Email : [toulouse@lasa.fr](mailto:toulouse@lasa.fr)

### ANNECY Office

Square du Rhône – Collaborative Workspace  
12, Avenue du Rhône  
74000 ANNECY  
SIRET : 302 506 480 00094  
Phone : +33(0) 6 27 57 19 51  
Email : [annecy@lasa.fr](mailto:annecy@lasa.fr)

<b>Company Name :</b>	Laboratoire d'Applications des Sciences Acoustiques
<b>Abbreviation :</b>	L.A.S.A.
<b>Legal form :</b>	S.A.R.L.
<b>Share Capital :</b>	€235 698
<b>Company Registration :</b>	RCS Paris B 302 506 480
<b>Business Activity Code (APE) :</b>	7112B

### ANTILLES - Partnership

Hosted at Optima Energies  
11, Hameau de Beauséjour  
97250 SAINT-PIERRE  
Phone : + 33 (0) 4 26 99 44 25  
Email : [antilles@lasa.fr](mailto:antilles@lasa.fr)

### GUYANE - Partnership

Chez Optima Energies  
12, Rue Robert Adami  
97354 REMIRE MONTJOLY  
Phone : + 33 (0) 4 26 99 44 25  
Email : [guyane@lasa.fr](mailto:guyane@lasa.fr)

